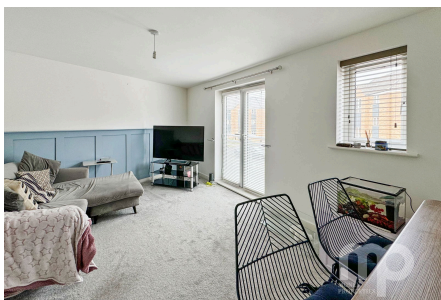


Briggs Mead, Wymondham

£174,995

🛏️ 2 🚿 2 🚗 1



Calling all first time buyers/investors! Great opportunity to purchase this stunning 2 bedroom first floor apartment located on the ever popular Becketts Grove development on the outskirts of Wymondham offering approximately 600 sq ft of living space. There is a large hallway, with a storage cupboard, a large open plan living room kitchen providing space for a dining table & French doors. The master bedroom comes with an en suite shower room. A further double bedroom is opposite the main bathroom with toilet, basin & shower over bath. Regular bus service and play areas for children. Allocated parking for 1 car plus visitor parking.

Tenure: Leasehold Council Tax: B EPC: B

Key Features

- First floor luxury apartment
- Large open plan kitchen living room
- Large entrance hallway with cupboard
- Offering approximately 600 sq ft of living space
- Allocated parking for 1 car plus visitor parking
- Two double bedrooms
- Master bedroom with ensuite
- Bathroom with bath & shower
- Immaculate throughout
- Perfect purchase for first time buyers / investors

